



2035 Vista Parkway, West Palm Beach, FL 33411
 Phone No. 866.909.2220 www.wginc.com
 Cert No. 6091 - LB No. 7055

THIS INSTRUMENT WAS PREPARED BY ERIC MATTHEWS, P.S.M.
 PROFESSIONAL SURVEYOR AND MAPPER, LICENSE NO. 6717
 FOR THE FIRM: WANTMAN GROUP, INC.

RESERVE AT JUPITER

BEING A PARCEL OF LAND LYING WITHIN A PORTION OF THE NORTHEAST QUARTER (NE 1/4)
 OF THE SOUTHEAST QUARTER (SE 1/4) OF SECTION 33, TOWNSHIP 40 SOUTH, RANGE 42 EAST,
 PALM BEACH COUNTY, FLORIDA.

NOTE:

COORDINATES SHOWN ARE GRID COORDINATES
 DATUM - NAD 83 (1990 ADJUSTMENT)
 STATE PLANE FLORIDA EAST ZONE
 TRANSVERSE MERCATOR PROJECTION
 LINEAR UNIT = U.S. SURVEY FEET
 ALL DISTANCES ARE GROUND
 SCALE FACTOR = 1.000030300
 PLAT BEARING = GRID BEARING
 GROUND DISTANCE X SCALE FACTOR = GRID DISTANCE

28

N 1/4 CORNER SECTION
 SECTION 33,
 TOWNSHIP 40 SOUTH,
 RANGE 42 EAST,
 NOT FOUND
 COR 53177
 N 954252.517
 E 933013.683
 PALM BEACH COUNTY POSITION

WEST LINE OF THE
 SOUTHWEST 1/4 OF SECTION 33,
 TOWNSHIP 40 SOUTH, RANGE 42 EAST

NORTHWEST 1/4 OF THE
 SOUTHWEST 1/4 OF SECTION 33,
 TOWNSHIP 40 SOUTH, RANGE 42 EAST

UNPLATTED

S 1/4 CORNER SECTION
 SECTION 33,
 TOWNSHIP 40 SOUTH,
 RANGE 42 EAST,
 NOT FOUND
 COR 53195
 N 948977.868
 E 933001.498
 PALM BEACH COUNTY POSITION

N 950607.914
 E 934330.742

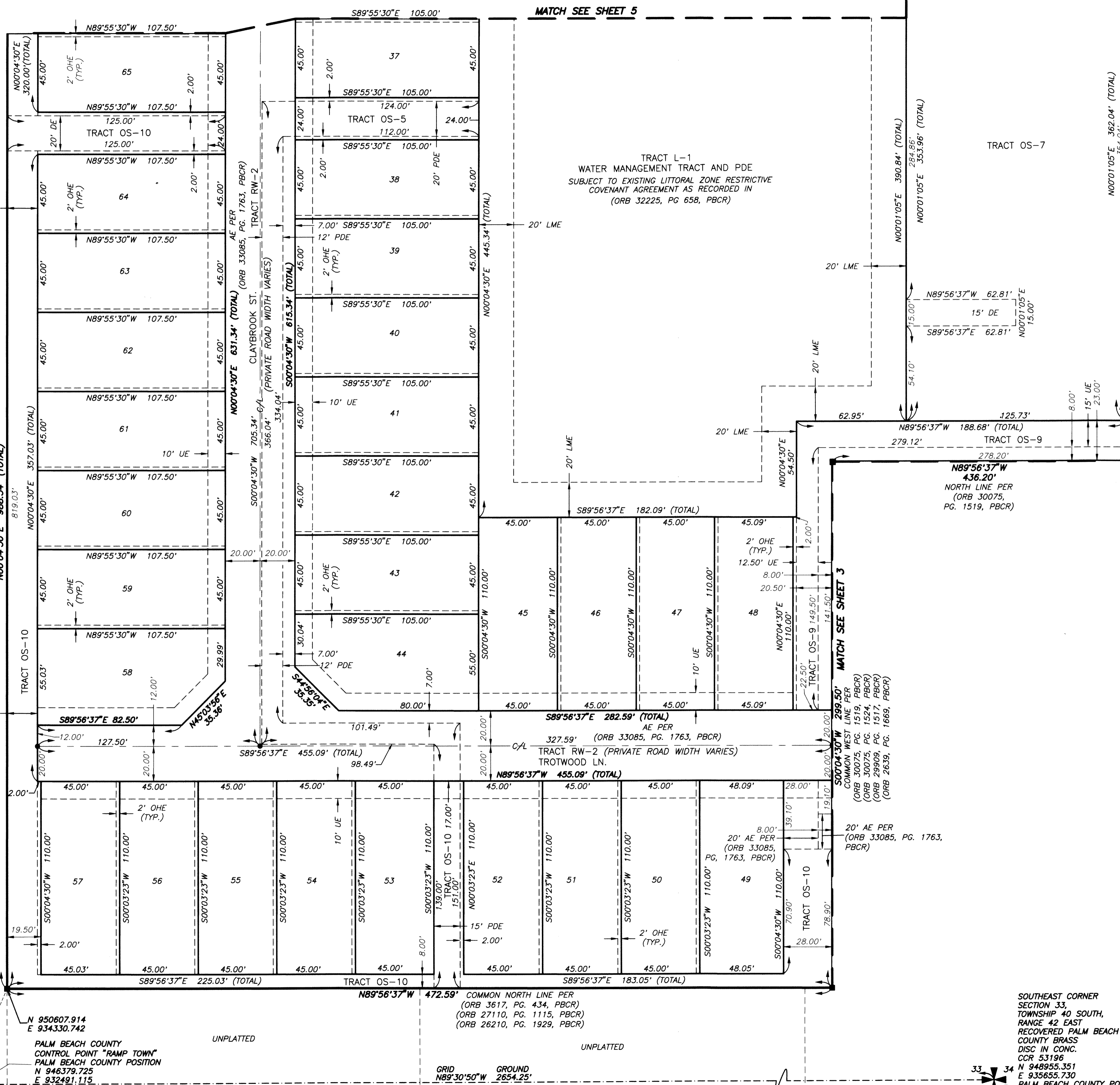
PALM BEACH COUNTY
 CONTROL POINT "RAMP TOWN"
 PALM BEACH COUNTY POSITION
 N 946379.725
 E 932491.115
 (NOT FOUND)

UNPLATTED

GRID GROUND
 N89°30'50"W 2654.25'

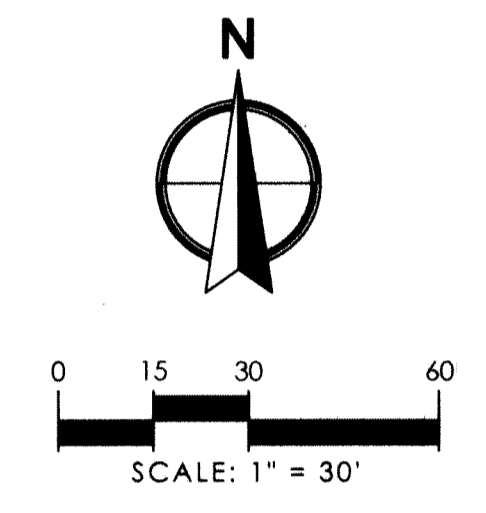
UNPLATTED

SOUTHEAST CORNER
 SECTION 33,
 TOWNSHIP 40 SOUTH,
 RANGE 42 EAST,
 RECOVERED PALM BEACH
 COUNTY BRASS
 DISC IN CONC.
 CCR 53196
 N 948955.351
 E 935655.730
 PALM BEACH COUNTY POSITION



69

SHEET 4 OF 5 SHEETS



- LEGEND**
- AE = Access Easement
 - C/L = Center Line
 - CCR = Certified Corner Record
 - CONC. = Concrete
 - CB = Cord Bearing
 - CD = Cord Distance
 - Δ = Delta (Central Angle)
 - DE = Drainage Easement
 - FND. = Found
 - LME = Lake Maintenance Easement
 - LMAE = Lake Maintenance Access Easement
 - L = Length of Arc
 - LB = Licensed Business
 - NAD = North American Datum
 - (NR) = Non Radial
 - ORB = Official Records Book
 - ⊙ = Permanent Control Point (PCP)
 - PBCR = Palm Beach County Records
 - PCN = Parcel Control Number
 - PG. = Page
 - PB = Plat Book
 - PRM = Permanent Reference Monument
 - R = Radius
 - OHE = Maintenance and Roof Overhang Easement
 - R/W = Right-of-Way
 - (TYP.) = Typical
 - UE = Utility Easement
 - = Set 4"x4" Concrete (PRM) w/Aluminum Disc Stamped "LB 7055 PRM" Unless Otherwise Noted
 - = Set Nail & Brass Disc Stamped "LB 7055 PRM" Unless Otherwise Noted

